

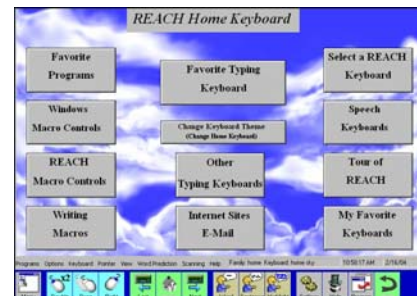


**Building Rainbows
Through Science and Technology**

Assistive Technology Products

A powerful toolkit for computer access & augmentative communication.

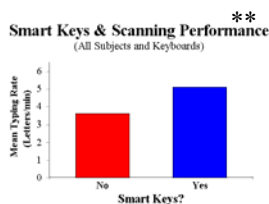
This new version of the popular *all-in-one* accessibility program has all the features you are used to: automatic window management; speech feedback & augmentation; word prediction; elaborate keyboard authoring capabilities; an assessment battery; “Hot Authoring” that lets you make quick changes to a key; selectable “keyboard themes” that help customize REACH to better suit your abilities; “home keyboards” (see picture to the right) that help you get to your favorite keyboards quickly; a dwell switch; unique scanning options (e.g., “undo last typed” by holding the switch closed); etc. It also has several new features including “Smart Switch” (lets you to define what your “click” is); expanded Hot Authoring; a new speech augmentation keyboard system; the ability to “associate dictionaries” with keyboards; and serves as a platform for Smart Keys, Smart Lists, Smart Speech, and the REACH Sound-It-Out Phonetic Keyboard.



Smart Keys™ (Major “Add-On” for REACH™)

\$150*

Helps you type faster and more accurately.



Smart Keys™ is a powerful letter prediction feature that can be “added-on” to REACH (see above). When typing the word “lucky,” type the first letter “L” and all the letters that do not follow the first letter “L” in the dictionaries that are currently open are removed from the keyboard (see pictures to right). By option, unlikely keys can have their colors changed or be grayed out rather than removed. This feature can be useful to everybody, but is especially important when scanning because of the time saved (see graph to left**).

Smart Keys™ predicts the next letter:



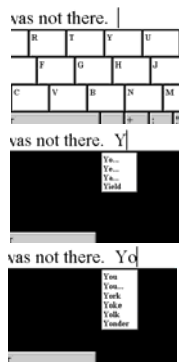
Type “L” and Smart Keys removes letters that don’t follow “L” in the currently open dictionaries!



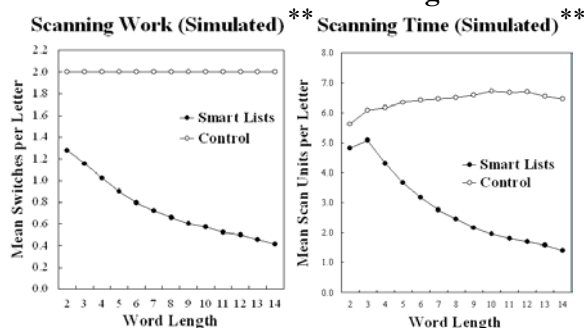
Smart Lists™ (Major “Add-On” for REACH™)

\$200*

Helps you type faster, more accurately, & with less work - Patent Pending.



Select the “Y” key and Smart Lists™ (Patent Pending) opens it up, showing a list of possible word beginnings (see pictures to left). This approach lets you keep your attention at the same location while performing the same task: picking the list option that best matches the beginning of the word you are typing. Soon, the target word is shown right on the key face! If scanning, your clicks are cut in half and your speed increases (compared to row/column scanning - see graphs to the right**).



ScanBuddy™ \$129* (Only \$70 if purchased with REACH and one major add-on.)

Lets you perform mouse operations while scanning.



Need to use the mouse anywhere on the screen when scanning? ScanBuddy™ uses a new approach to full screen scanning that lets you quickly and easily position the mouse. Then, you can choose from a variety of mouse button options. Use it alone, with REACH™, or with SoothSayer™. ScanBuddy™ is full of features and is easily customized to suit your scanning needs.

After positioning the mouse, there are many mouse button options to choose from (below are a few):



New!

“Sounds Like” - Spell, Write!™

(Patent Pending)

\$199*

Helps with your spelling and writing.

Sounds Like™ can help you improve your spelling accuracy. It is similar to the REACH Sound-It-Out Phonetic Keyboard™ (see the back page), but it does not include REACH’s computer access tools designed for people with physical disabilities. Choose from four phonetic keyboards. Quickly switch from using your phonetic keyboard to a standard on-screen keyboard (included), or to your hardware keyboard. In a controlled experiment, phonetic typing was found to significantly increase spelling accuracy for spelling-disabled children and adults. Add Smart Keys™ (\$269), Smart Lists™ (\$294), or Smart Keys™ & Smart Lists™ (\$364).



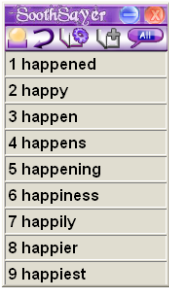
“Crystal” Phonetic Keyboard
Use it to “type” the sounds in a word.

SoothSayer Word Prediction™

\$149*

Dear Stephanie,

I hope you are doing well and your wasn't aware that had happened, but you I was hap



For typing/spelling assistance.

This program combines word prediction features with extensive speech output to help you find the word or sentence you are looking for. The user interface is very friendly and makes it easy to manage the many available options. Build your own custom dictionaries from text files. Speak highlighted text, word option pointed at, last word/sentence, letters/words/sentences as you type, etc. Only show the SoothSayer™ window when you get “stuck” (for example, after you’ve typed two or more letters and paused for five seconds). Have the words read aloud one at a time until you hear the one you want.



New!

SoothSayer™ Network Edition

\$249*

Use this popular program in a network setting. Install it once on the server, and then use SoothSayer™ anywhere on the network with your own custom settings.

New!

OneWay™

\$149*



(Patent Protected)

Forced to use scanning but capable of more? Try this new approach to mouse emulation. Position the cursor by moving a mouse, trackball, etc., in one dimension at a time instead of two simultaneously. (A dwell-switch option like DwellBuddy™ is included.)

New!

DwellBuddy™

\$49*



If you are able to use a mouse, trackball, or other pointer to position a cursor on a target location, but have trouble using the switch once you get there (to click, double click, etc.), try this affordable and easy-to-use dwell switch.

Mayer-Johnson

Picture Communication Symbols™

\$150-Large \$75-Small



Get the Mayer-Johnson PCS™ and see more than 100 of your REACH speech screens fill up with pictures! 6,000+ pictures in the large set, 2,800+ in the small set, add them to any REACH keyboard key.

Mouse&Caret Buddy™

\$39*

To assist computer users with low vision.



Shows where you are typing



This program helps you locate your mouse cursor and text caret by showing pictures next to them. This is useful for persons with limited vision. Choose from a variety of pictures, adjust their size, and set the pictures to disappear or appear when the mouse or keyboard are being used.

New!

Sound-It-Out Keyboard™ (Add-On for REACH™) \$100*

For Writing/Spelling Assistance - Patent Pending.

Adult's Phonetic Keyboard - with consonant sounds on left & vowel sounds on the right. Point at the "ch" key and it speaks the "ch" sound. Click on the "ch" key and . . .

Need some help with your spelling - who doesn't? This program allows you to type "phonetically." Point at the "ch" key and it says "ch... chair" in the kid's keyboard (below) or just "ch" in the adult keyboard (right). Select the "ch" sound and words that start with "ch" are shown (see middle picture to right). Point at any word and it reads the word aloud. Select the "air" sound, and "chair" is offered as a completed word and is typed when selected. Homophones are identified by color and brief phrases provided to help you distinguish among them.

Children's Phonetic Keyboard - point at the "B.." key showing a picture of a bus and it speaks "bih - - bus."



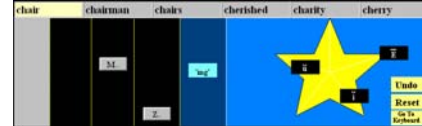
Already own REACH? Upgrade to Phonetic Typing for \$100!



... only sounds that follow the "ch" sound are shown.



Click the "air" key, and see words that start with "chair."

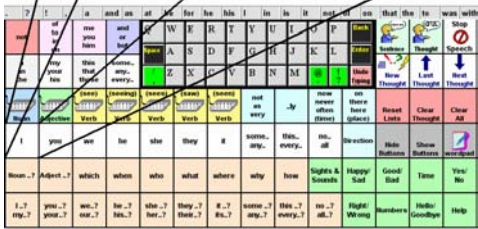


Coming Soon!

REACH Smart Speech™ (Add-On for REACH™) \$250*

Build sentences quickly for augmented communication or to speed up writing and reduce the number of clicks!

I ... (V-see) I have .. (N/Adj.to.)
 I .. (V-saw) I may .. (V-see/have seen)
 I am .. (V-seeing) I might .. (V-see/have seen)
 I am .. (N/Adj) I must .. (V-see/have seen)
 I can .. (V-see) I should .. (V-see/have seen)
 I could .. (V-see/have seen) I want .. (N)
 I did .. (V-see) I want .. (N/Adj.to.)
 I do .. (V-see) I wanted .. (N/Adj.to.)
 I had .. (V-seen) I was .. (V-seeing/seen)
 I had .. (N/Adj.to.) I was .. (N/Adj.to.)
 I have .. (V-seen) I will .. (V-see/have seen)
 I have .. (V-seen) I would .. (V-see/have seen)



Select the "I" key and the word "I" is typed and a list of related words is presented for immediate speech/typing. Then select the "Vb - saw" option, and a new keyboard is displayed on which the most frequently used single-person and past-tense verbs are displayed, and that same keyboard has letters that can be typed in case a less frequent verb is sought! Links also can take you to other such keyboards for nouns, adjectives, etc.

ScanBuddy™ & REACH™ Special Bundle for Scanning



+



+



Purchase REACH™ and any major "Add-On" (e.g., Smart Keys™, Smart Lists™) and get ScanBuddy™ for only \$70!

Applied Human Factors, Inc.

P.O. Box 228

Helotes, TX 78023

Phone: (888) 243-0098

Fax: (210) 408-0097

e-mail: sales@ahf-net.com

Internet: www.ahf-net.com



* All prices in US dollars and are subject to change without notice.

Price Summary:

REACH Interface Author™	\$329
Smart Keys™ "Add-On"	\$150
Smart Lists™ "Add-On"	\$200
Sound-It-Out™ "Add-On"	\$100
REACH Smart Speech™ "Add-On"	\$250
Purchase 2 REACH Add-On's & subtract	\$50
Purchase 3 REACH Add-On's & subtract	\$100
Purchase 4 REACH Add-On's & subtract	\$150
"Sounds Like" - Spell, Write!	\$199
Sounds Like with Smart Keys	\$269
Sounds Like with Smart Lists	\$294
Sounds Like with Smart Keys & Smart Lists	\$299
MJ PCS (for REACH) \$150-Large Set or \$75-Small Set	\$149
SouthSayer Word Prediction	\$129
ScanBuddy Mouse Emulator	\$129
Mouse&Caret Buddy	\$39

Quantity: 5-9 Discount: 30%

10-24 Discount: 37%

25-39 Discount: 44%

40-99 (School License) Discount: 55%

100+ (US School District) Discount: 60% (One Manual per 5 Licenses)

1 REACH Tablet & MJ PCS not included.

Site License Discounts!

Copyright 1992-2010 Applied Human Factors, Inc. All rights reserved. WordPad is a program that comes with Microsoft® Windows™. REACH Interface Author™, Reach with Smart Keys™, SouthSayer Word Prediction™, REACH Scan Plus™, REACH with Smart Lists™, REACH with Smart Speech™, REACH Sound-It-Out Keyboard™, SouthSayer Scan Plus™, ScanBuddy™, REACH Tablet™, REACH Tablet Plus™, Mouse&Caret Buddy™, Joystick Buddy™, OneWay™, OneWay REACH™ and DwellBuddy™ are trademarks of Applied Human Factors, Inc. Microsoft® and WordPad are trademarks of Microsoft Corporation. The Mayer-Johnson Symbol Set and Speaking Dynamically™ Pro are products developed and manufactured by Mayer-Johnson LLC. Mayer-Johnson Picture Symbol Set and Speaking Dynamically™ Pro are trademarks or registered trademark of Mayer-Johnson LLC. AT&T Natural Voices™ is a trademark or registered trademark of AT&T, the company that originally developed this speech synthesis product. ** Cited data were obtained through research supported by NICHD grant #1 R43 HD37713-01. Opinions, findings, and conclusions or recommendations expressed are those of the author and do not necessarily reflect the views of the National Institutes of Health.